

# *Celebration of Success*

*The Beckwith Experience – Memories of the Past and Present*



*25th Anniversary*  
Beckwith Residence Hall  
*1982-2007*

## Transitional Living: The Concept

In the 1984-85 issue of *Sigma Signs*, in an article entitled “The Greenbrier, Tanbrier, Beckwith Concept,” former Tanbrier resident Tom Hancock shared his impressions of the early transitional living program at the University of Illinois. “It gave me the confidence that I could live even though I was not physically independent,” said Hancock. “Tanbrier provided the scheme for organizing such a life. In fact, I still arrange for the care I require essentially the same way we did at Tanbrier.” The writers, Linda Mastandrea and Mike Pallis, summarized the transitional living concept that would eventually be embodied by Beckwith Hall. “It’s taking an ‘impossible dream’—the idea that individuals with severe disabilities can attend a university and participate in life on every level—and making it happen. Because of the vision and dedication of a few people, and the willingness of the first students to participate in a pioneering experiment in transitional living, future students have been and will continue to be able to to make their ‘impossible dreams’ come true.”

Beckwith Hall opened in 1982 to accommodate the residential needs of students with disabilities who require the help of personal assistants to perform basic activities of daily living. Over the years it has continued operating under this premise. The ultimate goal of Beckwith Hall programming is to make it possible for graduates to go anywhere their lives and career aspirations take them, confident that they can manage their own needs. As the stories and recollections contained in this retrospective make clear, much has changed in the world, at the University of Illinois, and at Beckwith Hall over the past 25 years. We can only anticipate that the next 25 years will be as eventful as the first, especially with the addition of new technologies and resources that will enable students with disabilities to experience previously unimaginable levels of personal empowerment and independence. However, no matter what changes the future has in store, one thing will remain certain: Beckwith Hall will continue to be a place where “impossible dreams” become reality.

# Welcome

By **Brad Hedrick**

**Director, Division of Disability Resources and Educational Services**

On behalf of the Division of Disability Resources and Educational Services it gives me great pleasure to welcome you to the 25th Anniversary Celebration of Beckwith Hall, a pioneering facility whose programs and services continue to set the standard for transitional residential support services and programs for students with severe physical disabilities. Together, we will celebrate: the gift of an Illinois farmer that made Tim Nugent's vision of a transitional residence hall a reality; the University's unparalleled commitment to serve the educational needs of persons with severe physical disabilities; the extraordinary private gifts that have been provided, most notably by the John D. and Minnie R. Schneider Charitable Trust, to support Beckwith programming and services; and, most importantly, the remarkable accomplishments of Illinois students with disabilities.

In 1959, Illinois became the first university in the world to create a transitional living program for students with severe physical disabilities who needed assistance in the performance of fundamental activities of daily living (ADL). Beginning humbly in a wing of Greenbrier Nursing Home, the programmatic initiative moved in 1961 to the more integrated environment of a private house on First Street, affectionately named Tanbrier, and, 21 years later, was relocated again to its current address on John Street.

Since its opening, Beckwith Hall facilities, programs, and services have made it possible for students needing ADL assistance to pursue their personal and professional aspirations with amazing success. Since 1982, Beckwith has housed 151 students, 87 percent of whom have earned Illinois degrees. In addition, 90 percent of Beckwith residents who have earned degrees since 1995 have obtained employment within a year of graduation or entered graduate or professional schools.

However, in keeping with the legacy of disability leadership which has become synonymous with this great institution, the University is not resting on its laurels. Indeed, the campus is vigorously engaged in the process of realizing yet another programmatic milestone, the building of a new wing within a state-of-the-art residence hall to house the programs and services that are currently provided at Beckwith. The dream of nesting these critical supports within a regular residence hall will at last be realized. When the first phase of this new facility opens in 2009, it will afford students with and without disabilities a substantially greater opportunity for interaction and collaboration within a more integrated residential community. Additionally, it will serve as a laboratory for the development and testing of educational programs and emergent technologies that will improve independent living and the quality of life of persons of disparate abilities across the lifespan.

I hope that you enjoy this opportunity to renew old friendships and interact with our current students and staff as we celebrate the past, present and very exciting future of Beckwith Hall. ☺



**Brad Hedrick**

## A Silver Anniversary Celebration

By Pat Malik

Director, Beckwith Hall

What a privilege to be the Director of Beckwith Residence Hall during its 25th Anniversary Celebration. The Silver Anniversary Celebration of a program is akin to the Silver Anniversary of a married couple. During 25 years of marriage there are some high points, some disappointments and a few surprises along the way. The same is true of Beckwith's 25-year program. Through the years there have been many high points, including the numerous residents who graduated from the University of

Illinois with undergraduate and graduate degrees and the vast accomplishments that occurred during their careers; a few marriages from Beckwith encounters; personal assistants who went on to medical school and are now practicing physicians; and, the many friendships that began at Beckwith and continue to this day. Of course, a program does not go through 25 years of service without some disappointments or difficulties along the way. Beckwith Residence Hall had its own growing pains in the early and middle years largely due to not having a model to learn from. Despite these growing pains, the Beckwith program has never lost sight of its mission, “. . . to provide housing, personal assistant, and disability services to Beckwith residents in a manner that will assist them in the attainment of their personal and educational goals. Beckwith services are based on individual student needs and goals, which are designed to maximize a student's independent living skills at a comfort level which is defined by the student.”



Pat Malik

While the residents and staff may change over the years, it is important to realize that the mission of Beckwith has not been compromised. Today, we continue to provide quality support services to residents with severe physical disabilities as well as emphasizing not only personal independence, but personal responsibility. As we look toward the future with new University Housing space, scheduled to open in 2009, there will once again be challenges and growing pains. However, knowing our mission and keeping the needs of residents at the core of the decisions made will ensure the mission of Beckwith will remain strong within a new facility.

There is a Chinese Proverb that states, “Those who say it cannot be done should not interrupt the person doing it.” I am happy to say that Beckwith has always been a place that has shown the world, “what can be done.” To the many Beckwith residents and staff who forged the path to get us to this Silver Anniversary, thank you. May those of us entrusted with carrying out the program's mission and goals do so in a manner that is worthy of those who came before us, so that when Beckwith's Golden Anniversary celebration takes place, there will be even more to celebrate! ☺



# *Before Beckwith: The Early Years*

In the years following World War II, a young man named Tim Nugent had a vision of the future in which Illinois students with disabilities would be independent participants in the world around them. At that time there was a large number of veterans with physical disabilities who would need specialized training if they were to be financially independent. To help address this need, a plan was suggested to the President of the University of Illinois whereby a small number of students in wheelchairs would be admitted to the University on an experimental basis. The site of this experiment was to be the Illinois campus in Galesburg, Illinois, and Tim Nugent was named the program's director. In the spring of 1949, however, a new problem arose. The governor of Illinois announced his decision to close the Galesburg campus of the University of Illinois—an act which seemed to signal the end of the infant Rehabilitation Program. But Nugent and his students wouldn't give up. They went to the governor and to officials of the University asking that the program be transferred to the Urbana campus. This program, they argued, fulfilled a very definite need not only for the veterans, but also for other individuals with disabilities throughout the country. A college education was a means to an independent, active life, yet at the time no other college would admit students with such severe disabilities. After some negotiation, the Rehabilitation Program was allowed on the Urbana campus.

However, there were new problems to be solved. Most of the buildings were inaccessible and had to be ramped. In the process of making these modifications, the Rehabilitation Program developed the first architectural accessibility standards. The great size of the campus made some system of accessible transportation necessary. In response, the program worked collaboratively with a Chicago area bus company to design and build the first transit buses equipped with hydraulic lifts to accommodate persons using wheelchairs. In the years that followed, as these original problems were solved, the Rehabilitation Program has continued to vigorously pursue the identification and removal of new barriers to the access and opportunities afforded persons with disabilities. For this reason, the University of Illinois Rehabilitation Program became a leader not only in rehabilitation practice but also in research and development of self-help aids, counseling techniques, and the development of postsecondary transitional residential support services and resources.

## **Greenbrier (1959)**

In the late 1950s, the newly constructed Greenbrier Nursing Home, located in southwest Champaign, had an entire wing unoccupied. Endeavoring to accommodate the residential needs of students who required assistance in the performance of activities of daily living, Tim Nugent met with Durward Judy, an attorney who owned the nursing home, and developed a plan to allow students with severe disabilities to reside there. Greenbrier allowed four or five students to live at the home and have assistance in dressing, hygiene, and eating. The students were picked up each morning by a U of I bus and taken to campus for a full day of classes, physical therapy, and socializing. It was not an ideal arrangement, but it was a visionary beginning nonetheless.



## Tanbrier (1961)

In 1961, the program moved from the Greenbrier Nursing Home to a three-story house on East John Street. The house was dubbed “Tanbrier,” a reference to the color of the exterior paint and the opportunity it provided to escape from the nursing home environment of Greenbrier. The first floor of Tanbrier, where the “Tanbrier” men lived, had bedrooms, bathrooms, and a large communal area in

the center of the house. The second and third floors were used for apartments for pre-med students who provided attendant care. One of the apartments was for a married pre-med student, whose wife became the head cook. Rent for the tenants was adjusted according to their services.



## A Tanbrier Retrospective

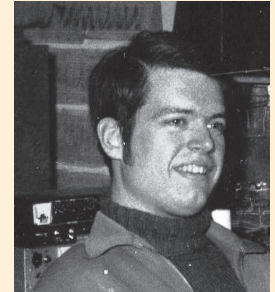
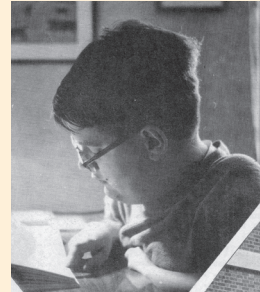
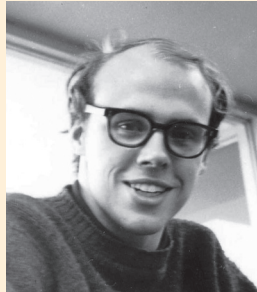
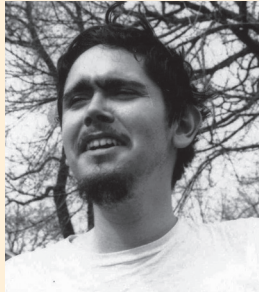
By George Stupp

It's been over 41 years since I first saw Tanbrier in the fall of '65. Who would have guessed that I'd be living there for eight years and it would be a defining period in my life? I was 21 and more than a little apprehensive. This was my first time truly on my own, and far away from home. But, this was my chance for a good college education and a future. My family had checked, and Tanbrier was the only practical option we could find at that time anywhere in the U.S.

It looked old, bustling, and in a state of disarray. Gibb Fink was scurrying about applying finishing touches. He was the landlord as well as the Rehab Center's occupational therapist, and he added many features to make it wheelchair accessible. His switchback ramp (with the signal buzzer button hidden under the railing) got us up to our apartment on the first floor. Gibb had rearranged the first floor layout and added pocket doors to increase useable space. There were two bedrooms, a combination living room and study area, a kitchen with large eating table, and a double bathroom. Though small, the bathroom had an open area under the countertops that made it highly functional. He had designed and built special adjustable study desks that adapted to our needs. The second floor with its apartment and single room, and the third floor apartment were used by the staff. I remember Gibb as a renaissance man, capable of great creativity and able to build almost anything.

Soon my first roommates arrived. These guys, Kerry Bamond, Dan Bryant, and Tom Hancock, were “old timers,” having spent more than a year at Greenbrier. I had just spent only one day there the previous year, but understood why it didn’t work for young college students. Greenbrier was a nursing home on the southwest edge of Champaign. Responding to the need to support students that were not physically independent, Tim Nugent arranged for Greenbrier to

provide housing in one of its wings and use of its physical support staff. The environment, combined with an unaccustomed staff and the isolation from the campus,



**The first four (l to r; Kerry Bamond, Dan Bryant, Tom Hancock, George Stupp)**

made for a very uncomfortable situation. Under pressure from the Greenbrier students and their parents, the Tanbrier concept was developed. I don’t know where the name came from. Rather than “tan,” Tanbrier was in fact cream colored with brown trim. The location was within “wheeling” distance from both campus and the Rehab Center (now called DRES), plus Gibb owned it. We could be part of college life, and we were.



**Our ramp**

It wasn’t long before the Tanbrier startup hubbub ended, and the classes began. The fall in Champaign-Urbana can be very nice, and I enjoyed wheeling the ten or so blocks to class, or just riding the buses. But the winter was something else. The midwest wind would howl, and the old house would creak. We used to say that there was a rusty nail holding Tanbrier together, and when it broke, the building would collapse. Yet that building stood until the early 2000’s. A coal-fired furnace with its mechanical coal stoker kept us warm the first winter. Fortunately we got a gas furnace before the next winter. A lot happened along the way. The ice storm of ‘67 canceled part of finals. While no other vehicles were moving, Curly’s Liquors’ 4-wheel drive delivered sandwiches, etc. to the house. Sometimes I would miss the

last bus in winter. Once while wheeling back, I ran across Larry Bocka who had also missed the bus, but his power chair was out of energy. I was able to push his chair with my power chair the eight blocks home in five inches of new snow. We were young and soon got used to the winters. We lost Kerry to muscular dystrophy the second year. New roommates moved in. We became five rehab students at Tanbrier. Later people moved into their own apartments or graduated. Ron Hecser died only a month after he had married and moved into his own place.

Of course the main idea of the college experience was to prepare for living in the “real world.” I knew that there would be a lot to learn academically. But, living at Tanbrier taught much more. It added the further dimension of living in the real world when you are not physically independent. While the Rehab Center was nearby as a safety net, we (the students) largely operated Tanbrier itself during my time there. The Center defined the concept, found the initial staff, helped early-on with kinks and always controlled which rehab students lived there, but we hired the subsequent staff and handled the day-to-day activities and finances. We even had our own letterhead which we used to bill agencies for Tanbrier services. We would take turns with paying staff and billing. Staff training was largely done ad

*(continued)*



*(Tanbrier Retrospective, continued)*

hoc. Each of us was expected to know our needs and effectively communicate them to those helping us. The upper classmen would advise new staff and some of the new rehab students who had not learned their needs or how to communicate them, plus the staff soon knew what was required. Staff was drawn from the general student body. No experience was required. It was full on-the-job-training. This usually worked quite well, avoiding pre-conceived ideas about handicapped students and correcting any prior inappropriate training. For maturity, we tried to employ married couples who lived in the apartments and single guys for the single room. Usually the wife cooked meals while the guys provided our physical help. Marin Stein used an Army company cookbook for inspiration. Her “garbage beans” made with leftovers and baked beans were actually quite good and always different. Giesla Seahafer spoiled us with her German pudding cakes.

The Tanbrier atmosphere was unique in many ways. Though there were bumps along the way, we usually formed a surprisingly cohesive group. Both the rehab students and staff shared much in common. We were all students together preparing for the real world. We ate together (commonly eight at a time) and socialized together. It was like a home. You could live there year round as long as you remained a student and arranged help over breaks (usually easy, since staff lived there too). We supported



**The second wave (l to r; Wes Queypo, Larry Bock, Carl Launius)**

each other with some of us tutoring the others. Great peer pressure existed to maximize our physical independence, especially on campus. Being inventive was stressed, and clever self-help strategies shared. Ron (a quadriplegic with no hand function) proudly developed a way to pick up a dime from the floor.

The semesters flowed by. Before long I had a degree, but no job despite good grades and many interviews. There was a time before equal employment opportunity! So I stayed on for grad school and got more “overqualified.” Then I was the old timer, carrying more responsibility with Tanbrier affairs. Eventually I got another degree and the job. It was time to leave the place that had been my home for so long and go out into that real world.

---

***In 1967-68, Tanbrier House had the highest collective GPA of any university residence.***

---

I was fortunate to attend the University of Illinois. It was pivotal in all that followed for me, but Tanbrier was the key part. It instilled a stubborn independence, a create-your-own-way attitude, and the ability to be assertive and think out-of-the-box. Being part of a pioneering effort was a privilege, and my experience there has served me well. My thanks and best wishes go to all that were a part of the Tanbrier adventure.

## Beckwith Hall (1982)

In October of 1977, the University of Illinois Board of Trustees approved the Beckwith Living Center as a noninstructional project, and four years later, in 1981, the building was completed. The building was made possible by Guy M. Beckwith, a retired Illinois farmer from the Kankakee area, who bequeathed portions of his estate to the University of Illinois for the development of an educational housing facility. Although Mr. Beckwith did not live to see the building completed, his sister-in-law shared some background about him shortly before the building was completed:

*“Guy Beckwith wanted to attend college, but his father was against it—as a matter of fact, none of his brothers and sisters went to college. He didn’t go to college, but he acquired a great knowledge in many fields by intense reading and later on extensive traveling in America, Canada, and Europe. He was curious about the habits and customs of other nations, just as he wanted to know all the marvels to be seen in his own country. After a rough beginning, he achieved financial success. He cherished the idea of leaving a trace of what he had accomplished through his intelligence and willpower, and this was a building bearing his name constructed on the grounds of the University.”*

On May 12, 1982, the building was dedicated at a ceremony that included Tim Nugent, UI Chancellor John Cribbet, UI President Stanley Ikenberry, and other University dignitaries. Also present was Mrs. Wilhelmine Hursh, Mr. Beckwith’s widow, who presented President Ikenberry with a family Bible that had been given to Guy Beckwith by his mother in 1912. The Bible remains preserved in a glass case in the Beckwith Hall Library.

*Illiniweek*, the campus newspaper, described the facility in their May 1, 1982, issue. “Beckwith Hall is a two-story structure with 20 sleep-study rooms, a kitchen, dining hall, library and lounge on the first floor. The library-study area is equipped with terminal access to all computer resources on campus. The second floor includes two two-bedroom apartments, two one-bedroom apartments, one efficiency apartment, laundry facilities and a medical suite with emergency care equipment facilities and office. The apartment units on the upper floor house the full-time live-in staff of six, married students who may no longer need hospital care but still need various support services, and students nearing graduation who wish to prepare for living on their own.”





## *Beckwith Dedication: May 12, 1982*



UI President Stanley Ikenberry accepts a family Bible from the widow of Guy Beckwith, Wilhelmine Hursh. The Bible is still on display in the Beckwith Hall Library.



Above: Associate Chancellor Paul Doebel, Board of Trustee member Paul Stone, Chancellor John Cribbet, Wilhelmine Hursh, Tim Nugent, and President Stanley Ikenberry at the dedication.



Staff and residents: back row l-r: Tom Thornton, Tim Nugent, Wilhelmine Hursh, Tom Lanker, Steve Broch, Paul Clements, Jane Thornton, Dellas Clements. Front row l-r: Gary Oswalt, Brian Benkendorf, Michael Luber, Pete Garceau, Hank Torres, John Beck, Reo Wilhour. Missing from photo: Larry Brescher and Don Robinson.



# 1980 – 1984

## World in Review: 1980-1984

**1981** – Marriage of the Decade: Prince Charles married a kindergarten teacher named Diana Spencer.

**June 1981** – Major League Baseball strike occurred. No games played until August 1, 1981.

**July 7, 1981** – Sandra Day O'Connor named the first woman to the Supreme Court by President Ronald Reagan.

**July 1981** – First flight of a solar-powered plane. Flight was over 5 hours in duration, with care being taken to always keep in the sun's rays, otherwise the plane would take a nosedive and crash.

**1981** – Erno Rubik invented and marketed his famous 3D puzzle. By July 1981 over 10 million were sold.

**August 1, 1981** – MTV debuted in the U.S.

**December 1982** – Barney Clark received the first mechanical heart called the Jarvic-7.

**1982** – Michael Jackson's Thriller album released; eventually sold over 42 million copies making it the biggest-selling album of all time.

**1984** – Michael Jackson's famous Moon Walk originated.

Famous catchphrases – "Where's the beef" and "You look Mahhhvellous!!!"



## Beckwith Memories

By Mike Luber, Beckwith Resident, 1981-1985

It's hard to believe 25 years ago in April of 1981 I was visiting the Illinois campus. I was given a tour of this new accessible dormitory called Beckwith Hall, which was far from completed. I was reassured that it would be finished and ready for occupancy come August. The thought of going out of state for college and the idea of living independently while you're getting a great education were very intriguing. Despite many concerns and fears that I had, I decided to throw caution to the wind and attend the University of Illinois. I spent four great years living in Beckwith while overcoming many challenges. I gained many things in addition to a fine education at the University of Illinois.

---

*I spent four great years living in Beckwith while overcoming many challenges. I gained many things in addition to a fine education at the University of Illinois.*

---

Despite the many challenges and difficulties posed by living at Beckwith, it was one of the most beneficial periods of my life. Initially it was very difficult living with other individuals who were

disabled, because I was used to being the only disabled individual in a high school of 2000 students. In that environment it was easy to ignore my disability and blend in as much as possible. Living with others who were disabled forced me to see and accept my own disability and confront many issues. I soon learned that a disability is nothing to be ashamed of and I soon embraced the disabled community and was proud to be part of it.



**Mike Luber (left) chatting at the Beckwith Dedication luncheon**

Most important, though, were the friendships that I gained living at Beckwith. I still remain in close contact with a few former residents, but I regret to say that I have lost contact with many. However, I still retain the memories of those friendships and the great times that we had together. The late-night parties, the football and basketball games, the occasional Friday night group outing to the movies, popcorn study breaks, and the usual shenanigans and pranks that went on in most college dorms will always be with me. ☺

## Beckwith and Campus News

**1982** – Residents moved into Beckwith for Spring semester. Tom and Jane Thornton were the first Resident Directors.

**May 12, 1982** – The Guy M. Beckwith Living Center was dedicated.

**1983** – Diana Humphrey became the first female resident of Beckwith Hall.

**1983** – Mike Luber rushed ZBT and was an active member for 2 years. ZBT added a ramp so he could get to the first floor of the house.

**1983** – Football coach Mike White won UPI Coach of the Year award.

**U of I average attendance** – 34,769

**U of I Tuition and Fees** – \$921.00/semester

**Beckwith Disability Demographics** – Spinal Cord Injury, Cerebral Palsy, Muscular Dystrophy /Spinal Muscular Atrophy

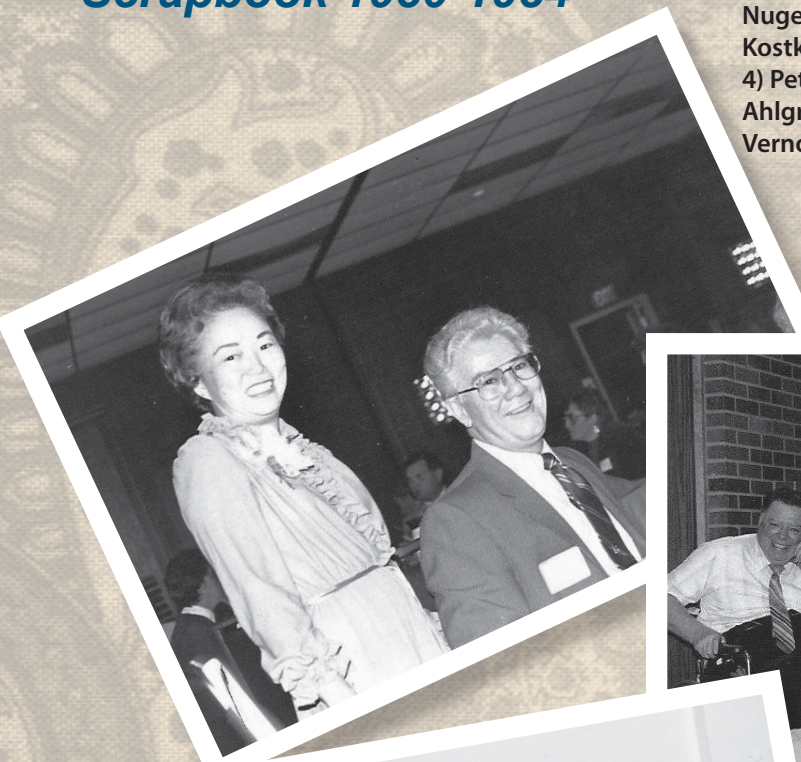
**Favorite places to hang out** – White Horse Inn, Steak & Shake

**In Memory:** Brian Benkendorf



# Scrapbook 1980-1984

Clockwise from upper left: 1) Jeanette and Tim Nugent; 2) Dr. Joseph Larson, Annette Hansen, Carol Kostka, Sue Suter, and Vinnie Integlia; 3) Al Penn; 4) Pete Garceau; 5) Diana Humphrey and Debbie Ahlgren; 6) Tom Shipp, Tim Needham, and Karen Vernoff.





# 1985 – 1989

## World in Review

**1986** – Bears won Super Bowl XX, making the Super Bowl Shuffle famous.

**October 19, 1987** – Stock Market fell a whopping 508 points! It was almost twice the drop that began the great depression. This event caused chaos on Wall Street.

**1987 & 1988** – Michael Jordan was the overall leading scorer in the NBA.

**Summer 1988** – Florence Joyner set a world record of 10.49 in the 100-meter dash during the Summer Olympics.

**1988** – America went into a severe drought which started people thinking about the magnitude of environmental problems.

**1989** – Largest and most harmful oil spill in U.S. history occurred as the Exxon Valdez crashed killing many seas creatures living in the area of Prince William Sound, Alaska.



## Remembering Kim Robb (1966-2007)

By Stephanie Gehring, *Daily Southtown* Staff Writer

*Reprinted with permission of the Daily Southtown*

As a woman who looked at every day as a gift, Kimberly Ann Robb regularly celebrated life and friendships. “She was always smiling. She loved people. Once you were Kim’s friend, you were always Kim’s friend,” said her father, John Gewerth. “She always kept relationships going.”

About 800 people showed up to pay their respects at Mrs. Robb’s visitation earlier this month. “There were so many people there (at the visitation) that she had not seen in 15 or 20 years,” said Gewerth, of Homer Glen. “They still came because they knew her at some point.”

Mrs. Robb, 40, of Palos Heights, died Feb. 3 at Palos Community Hospital from pneumonia after an emergency appendectomy. Muscular dystrophy confined Mrs. Robb to a wheelchair. She used her personal experience on the job as an accessibility specialist. Friends and family described her as driven and goal-oriented. “She had a lot of goals. She set goals for herself, and she usually set them really high,” her father said. “Once she set a goal, she set out to achieve it.” She married her husband, David Robb, about 10 years ago. They lived in Palos Heights.

“She was the sweetest person I’d ever met. She was very loving,” David Robb said. “She taught me what it meant to be loved and how to actively love others. She was my best friend, my companion.”

Mrs. Robb grew up on Carolyn Lane in Alsip. She was the only child of Beverly and John Gewerth. “There was a tremendous group of kids around her age, and they just treated her like any other so-called ‘normal’ kid,” Gewerth said. “When they started driving, they took her wheelchair and threw it in the car and took her with them.”



She graduated from Mother McAuley High School in Chicago's Mount Greenwood community. She received her bachelor's degree in psychology from the University of Illinois and her master's degree in rehabilitation counseling from the University of Arizona in Tucson. Her first job was at Progress Center for Independent Living in the western suburbs. The organization helps people with disabilities live independently. Mark Karner, director of advocacy at Progress Center, said Mrs. Robb was a role model for people with disabilities. "She lived her whole life with a significant disability and showed people you could be successful, have a family life, and be a valuable contributing member of society as a person with a disability," Karner said. From the Progress Center, she moved on to working at the Illinois Department of Rehabilitation Services. She then worked at the Regional Transportation Authority for about nine years.

Mrs. Robb got her companion dog, Caitlin, just six months ago. The dog picked up whatever Mrs. Robb dropped, would press buttons to open automatic doors, and even hand the credit card to a cashier, her family said. "She achieved what she wanted to do in the work world. She worked in downtown Chicago and rode the train everyday," Gewerth said. "She had a lot of people in her life that would help her through the day." The Chicago Transit Authority passed a resolution hailing her accomplishments and the Regional Transportation Authority is expected to do the same at its March 1 meeting.

"As an employee, she was one of the kind of rare people who was highly organized, always prepared, always thinking ahead to how she was going to handle her job duties," said Phil Shayne, director of regional services for the RTA. "She was always extremely professional as she carried out her duties and her personal demeanor in the office." Shayne said Mrs. Robb had a special kind of drive and served as an inspiration to those who worked with her. "She kind of looked at her physical limitations as just a part of her life that she had to deal with and fit into everyday normal living," Shayne said. "In that sense, she was truly remarkable to watch and to work with."

Her husband said Mrs. Robb was a terrific planner and loved to travel. The couple traveled extensively during their life together, taking about two trips a year, David Robb said. "She would thoroughly investigate our destination and plan out day excursions and coordinate any transportation we needed," David Robb said. "She would arrange any shuttles we would need, make reservation for hotels -- she planned everything. She was a planner." She excelled in party planning, her family said. "Every party had a theme," her father said. "One of the best ones, she had a Mexican theme for Mother's Day and called it 'Cinco de Mama.' She always had some kind of theme."

The Robbs also participated in Moraine Valley Church's marriage mentor program. David Robb said the couple served as mentors to three engaged couples. "Kim always wanted to be a marriage counselor and had a keen interest in the marriage mentoring program," David Robb said. "We got involved about five years ago." Mrs. Robb created a Web site that included photos of vacations, parties, holidays and other events.

"Everything was an event. She made every opportunity an event to cherish life," David Robb said. "She thanked God everyday. Every day was a gift to Kim." ❧



**Kim Robb with Caitlin**

## Beckwith and Campus News

**1986** – Timothy J. Nugent officially retired from his position as Director of the Rehabilitation-Education Center, which he founded in 1948. Dr. Joseph Larson appointed as new Director.

**1987** – Dr. Frank Maglione, Jr. retired after 26 years of service, mostly as a rehab counselor.

**February 17, 1989** – Dr. Joseph Larson passed away.

**1989** – Long time Assistant Director Joe Konitzki retired.

**1989** – After 33 years, Chuck Elmer retired as Supervisor of Physical Therapy.

**1989** – Dr. Paul Leung named as Director of DRES.

**U of I average attendance** – 35,884

**U of I Tuition and Fees** – In state: \$1,678/semester; Out of State: \$4,997/semester

**Beckwith Disability Demographics** – Spinal Cord Injury, Cerebral Palsy, Osteogenesis Imperfecta, Spinal Muscular Atrophy

### In memory:

David Guenther

Phoebe Renken

Peter Fredriksen

Kimberly Robb (née Gewerth)

Carol Kostka

## Scrapbook 1985-1989

This page: right, Kirk Bonnell and Kat Madayag;  
below, new student picnic







This page clockwise from top left: 1) Dr. Joseph Larson; 2) Tim Schellenberg; 3) Tyler McHaley, Itzhak Perlman, and Todd Schmiedl; 4) Joe Kutil and Dale Prochaska; 5) Chuck Elmer, Tim Nugent, and Joe Konitzki





# 1990 – 1994

## World in Review

**April 25, 1990** – Hubble Telescope launched, allowing unprecedented viewing of deep space.

**1990** – The Americans with Disabilities Act was passed.

**1990-1991** – Gulf War

**1992** – Americans with Disabilities Act went into effect.

**1993** – Mosaic web browser, a graphical browser developed by a team at the National Center for Supercomputing Applications at the University of Illinois, propelled the popularity of the World Wide Web, forever changing the way we communicate, spend money, and do business.

**1993** – Bomb detonated in the basement of the World Trade Center.

**1994** – Brady Bill enacted mandating a five-day waiting period when purchasing a gun.



## Thriving at Beckwith Hall

By Michael Cafferty, Beckwith Resident, 1991-1996

I use a sip and puff wheelchair because I'm paralyzed from the shoulders down as a result of a car accident in September of 1988 in Chicago. After months of rehabilitation at the Rehabilitation Institute of Chicago, I went to the rehabilitation center/home Winning Wheels in Prophetstown, and attended Sauk Valley Community College for two years. When I was deciding on a four-year college, the University of Illinois at Urbana-Champaign was on the top of my list. I didn't think my grades were up to snuff to go to such an awesome college. As a result, I set my mind to attending Southern Illinois University at Carbondale.

When I visited Southern it didn't feel right. There weren't any students around, I didn't know anyone, I was five hours from family and friends, and I was completely paralyzed and starting a four year journey. I was overwhelmed. Things did not get any better once I saw the dorm in which I would be living. The building and room were dark and located in a seemingly isolated area. It even seemed that there were only two beds in this building. Other thoughts were racing through my head. What if I needed help? What if I fell out of my wheelchair? What if I was thirsty or hungry? What could I do? I knew Carbondale was too much, so I applied to Illinois.

When I began attending the University of Illinois, I wanted to become a psychologist. I wanted to help people like myself who had their lives changed in an instant. During my stay at Beckwith, however, the friends I met changed my mind. They had disabilities such as cerebral palsy, muscular

dystrophy, and spinal cord injuries. I saw “us” thriving at Beckwith. It was like an incubator for success, a role model for the rest of the world.

I learned a lifetime of lessons at Beckwith. Unfortunately, I can't put into words how fortunate I was to live there. I also can't put into words how Beckwith has enabled a completely paralyzed individual to be a completely independent individual. I learned that if people (not only people with disabilities) are given a chance, and if they have the determination, there are no obstacles.

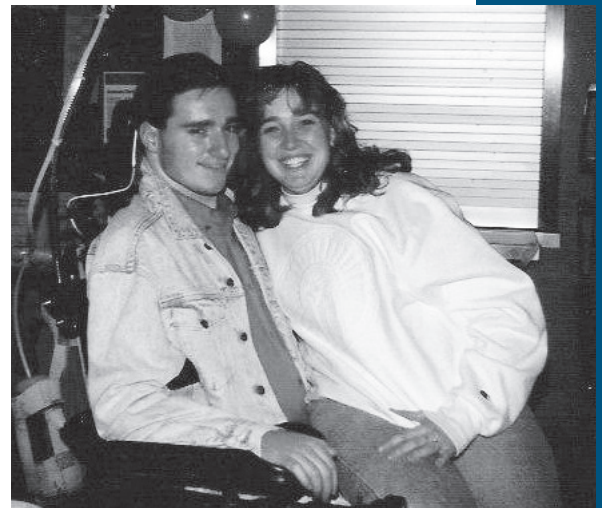
Some people say that Beckwith is not a good place for people with disabilities to live and thrive; that students with disabilities should be integrated with able-bodied students at other dorms. I ask those people to try to imagine being paralyzed and to adjust to that life—in seconds! Or, imagine leaving home with a disability, never having lived alone before, and trying to obtain a college degree. It's not easy. Then I'd ask those people how in the world I could manage my life without living at a place like Beckwith? Beckwith was not only a residence hall, but also a place where people with similar obstacles in life could talk to one another. A place where students could “compare notes” on how and what they felt was the best way to go about things.

Beckwith is a college dorm where people with severe disabilities can live and become accustomed not only to being a college student, like our able-bodied counterparts, but where they can become intelligent, confident, self-supporting members of society. Just take a look at what came out of Beckwith: lawyers, doctors, professors, engineers, just to name a few. I suppose a good analogy to describe Beckwith would be “what you put into it is what you will get out of it.”

Beckwith is also a stepping stone for persons with severe disabilities. When I lived at Beckwith, I became more familiar with my disability. I learned how to become an independent adult. I learned how to find the “best” personal assistant (PA) and how to schedule them to assist me. I learned how to schedule four or five college classes, study for them, and pass them. I learned that there are hundreds of individuals with disabilities who succeed when given some support. All of these things and more enabled me to become who I am today.

I used all of my experiences at Beckwith to help me through DePaul Law School. I had no problem scheduling my PAs to assist me in the mornings and evenings. I had very few problems adjusting to juggling law classes and my living arrangements. Beckwith was the “real world” and the stepping stone for my new life and my new career.

In September of 2000, I received an envelope in the mail that read “we are pleased to inform you that you have passed the Illinois Bar Exam.” On November 9th, 2000, I was sworn-in by one of the justices of the Illinois Supreme Court as an attorney. I then began working at the Cook County Office of the Public Guardian where I am responsible for assisting persons with their personal and/or financial affairs. Yes, I lived, ate, rolled, cried, smiled, fell, laughed, and learned at Beckwith. ☺



**Michael Cafferty and Kathleen King**



## Remembering Todd Schmiedl (1962-2006)

Todd Schmiedl was a member of the 1980 U.S. Olympic Trap Shooting Team. That year, the United States boycotted the Olympic games, and during the summer Todd was seriously injured in a catastrophic auto accident. The accident rendered him blind and severely paralyzed. Despite



his multiple disabilities, Todd pursued an academic course and made history as the first blind quadriplegic to earn a doctorate in clinical psychology from Argosy University. Prior to graduating with his doctorate, Todd graduated with honors in pre-med and psychology from the University of Illinois. He also earned a Master of Science degree in Rehabilitation Administration from the University. After his graduation, Dr. Schmiedl became a peer mentor in the Illinois Chapter of the National Spinal Cord Injury Association.

He was an Adjunct Professor at Argosy University and was appointed by Governor Jane Hull to the Arizona Advisory Council on Spinal and Head Injuries.

Dr. Schmiedl was a national presenter and speaker and member of the American Psychological Association and the National Academy of Neuropsychology. Papers he wrote on neuropsychology and assistive technology have been published in numerous journals. Todd met his wife, Patricia, when he came to her place of business for a job interview. They chatted while he was waiting and he asked for her phone number before he left. Todd always joked that he didn't get the job, but he did get a wife. Todd and Patricia complemented each other and made a wonderful team. They were very much in love and had 13 magical years together. ☺

### Beckwith and Campus News

**1994** – Transitional Disability Management Training Program switched from a “provide everything” approach to one that enabled residents to assume control for themselves in terms of their personal assistants.

**1994** – Ten people from seven East Asian countries toured Beckwith and other facilities under sponsorship of the U.S. Information Agency.

**1994** – Every U of I student was issued a “ph” (personal handle) and a password enabling them access to the Internet.

**U of I average attendance** – 35,810

**U of I Tuition and Fees** – In state: \$2,420/semester; Out of State: \$6,539/semester

**Beckwith Disability Demographics** – Spinal Cord Injury, Cerebral Palsy, Osteogenesis Imperfecta, Spinal Muscular Atrophy.

**In memory** – Julie Grimm, Joseph Kutil, Krista Samide-Barnes, Todd Schmiedl, Andrew White



## Scrapbook 1990-1994

Clockwise from top left: Dr. Paul Leung; 2) 1994 DSO Holiday Party; 3) Mike Rembis; 4) Beckwith Residents; 5) Norm Lyduch, Maureen Gilbert, and Shelly LeVasseur





# 1995 – 1999

## World in Review

**1995** – O.J. Simpson was tried for the murder of his ex-wife, Nicole, and her friend Ron Goldman. He was found not guilty.

**April 19, 1995** – Timothy McVeigh bombed Alfred P. Murrah Federal Building in Oklahoma City.

**March 1996** – Bill was passed giving the president line item veto authority allowing the him to veto specific parts of a spending bill while approving the rest.

**1996** – Summer Olympics in Atlanta, Georgia rocked by bomb explosion.

**1996** – Television industry announced a TV Parental Guideline rating system. Cable expanded to 74% of U.S. households.

**August 31, 1997** – Princess Diana died in a car accident after drunken chauffeur hit a bridge post in a Paris tunnel. Investigation found that if Diana and Dodi Fayed had been wearing seatbelts they could have survived.

**June 1998** – Supreme Court declared line item veto unconstitutional.

**April 20, 1999** – Most lethal school shooting occurred at Columbine High School in Littleton, Colorado.

**December 31, 1999** – U.S. returned management and control of the Panama Canal and the Canal Zone to Panama.



## Beckwith Works!

By Matt McClure, Beckwith Resident, 1996-2001

Hello, you fortunate readers. My name is Matt McClure, and I'm assuming that if you're reading this "blurb" you're somewhat (if not QUITE) familiar with Beckwith Hall. I am a Beckwithian, having lived there from August of 1996 to May of 2001. I am one of many, many U of I alumni who is proof that Beckwith works.

Let me say that again: Beckwith works.

You see, I thought when I visited Beckwith as a naïve high-schooler, and even as I moved in as an even more naïve freshman, I kind of thought that Beckwith Hall was a "day-care," or a "protective" place for parents to send their kids off to college if they had a disability. Wow, was I wrong! I quickly learned that it was, and is, a place for growth. My parents worked very hard while I lived at home to "train" me for living outside of that environment, unbeknownst to me. But it didn't take long for me to realize that I still had a lot to learn.

I learned all of the things any college kid comes across in their first sustained time away from home—but little did I know until much later that it was Beckwith that made these experiences so easy, because they virtually eliminated the “disability part of it.” Of course, Beckwith is totally accessible, it’s in a great location on campus, and it provides meal and housekeeping service, as well as

transportation. But what went on with the employees: the PAs, floaters, meal assistants, door monitors, etc., was what truly made it work.

---

***I am one of many, many U of I alumni who is proof that Beckwith works. Let me say that again: Beckwith works.***

---

I know of NO ONE who’s ever lived at Beckwith who doesn’t appreciate

and care for those who took care of us. Every year, the administration seems to bring in a lot of great

people—to take care of a lot of great people! It’s hard to explain to anyone who hasn’t experienced it first hand, but it’s the interaction with each other AND the employees that makes Beckwith work. Many people (including myself at times) wanted to move out. Many of us knew we could live on our own since we’d lived at Beckwith and learned what we’d needed to do. But a lot of us stayed—if there was room. Why did people stay? I can’t answer that for everyone. For me, I had proven to myself that I could maintain an apartment the summer after my freshman year, but I lived there for 9 semesters.

And for each semester at Beckwith, I learned some valuable thing I would later use.



**Matt McClure with Jennifer Knapp and Kristin Kaminski**

Now, when I was asked to write this little blurb for this book, I was asked to include some anecdotes of specific experiences I had while living at the Hall. After much thinking, I couldn’t come up with any I wanted published! (Just kidding.) But I really wanted to express my personal appreciation for what Beckwith did for me. I still live in Champaign (in Campustown), and I still visit Beckwith frequently. I’m pleased and proud to say it’s a healthy and strong environment to this day, with no end in sight.

Again, I’m Matt McClure—a proud Beckwithian! ☺

## Remembering Matthew A. Odelius (1979-2000)

Matt came to the University of Illinois in August of 1997. He wasn't the typical freshman that we encounter at Beckwith. With so many places to go and things to do, it can be a little overwhelming for a student with a disability to adjust to the campus and get to know people. Not for Matt though.



He enjoyed meeting people, and his newfound freedom. It was not unusual for Matt to venture out by himself to a group meeting, a party, or karaoke night. He was actively involved with Illinois Student Government, I-Guides, Delta Sigma Omicron, and Inter-Varsity Christian Fellowship. In memory of Matt and in appreciation of the services provided here, his family established a scholarship fund in Matt's name for students at Beckwith Hall. Abbott Laboratories matched the Odelius's gift, and other individuals and companies have also donated to the fund. Recipients of the award must be a UIUC student with a severe disability residing at Beckwith Hall, be in good academic standing, and demonstrate leadership in advancing the involvement of students with disabilities in all aspects of academic and co-curricular life. ☺

### Beckwith and Campus News

**1995** – At the request of Provost Larry Faulkner, an external committee performed a review of the structure and services of the University of Illinois Division of Rehabilitation-Education Services, in which one recommendation was to close Beckwith Hall. His thoughts were that students with disabilities requiring personal assistance should be afforded housing within the more integrative setting of UIUC residence halls.

**1997** – Brad Hedrick hired as the Director of DRES.

**1997** – DRES submitted a copy of the 1995-96 *Sigma Signs* edited by Bryan Pratt in a media contest sponsored by the Association on Higher Education and Disability (AHEAD) in which it placed second.

**1998** – First Annual Information Technology and Literacy Camp was held in which campers with severe physical disabilities stayed at Beckwith.

**September 1998** – *New Mobility Magazine* selected the University of Illinois as the nation's top university in providing services for people with disabilities. Kat Madayag was pictured and interviewed regarding her experience with Beckwith Hall.

**1998** – Kevin Kage wrote "The Beckwith Hall Song."

**U of I average attendance** – 36,298

**U of I Tuition and Fees** – In state: \$3,282/semester; Out of State: \$9,682/semester

**Beckwith average Room & Board** – \$6,419

**Beckwith average PA costs** – \$9,347

**Beckwith Disability Demographics** – Cerebral Palsy, Muscular Dystrophy, Spinal Cord Injury, Spinal Muscular Atrophy, Friedreich's Ataxia.



## Scrapbook 1995-1999

Clockwise from top left: 1) Matt Mannos and Kevin Kage; 2) DSO Holiday Party; 3) John Kamradt and Bob Corum; 4) Wheel Awareness participants; 5) DSO Halloween Party





# 2000 – 2004

## World in Review

**February 25, 2000** – Wary investors caused stock plunge, beginning the end of the Internet stock boom.

**November, 2000** – U.S. presidential election was the closest in decades.

**August 23, 2000** – Richard Hatch outwits, outlasts, and outplays the other Survivor cast members to win a million dollars.

**June 6, 2001** – National Academy of Sciences reported that global warming is on the rise. Leading scientists reaffirmed popular view that human activity was largely to blame.

**September 11, 2001** – Terrorists attacked United States using jetliners to hit the World Trade Center and the Pentagon. A fourth plane crashed outside of Pittsburgh in a foiled attempt at another site.

**May 13, 2002** – U.S. and Russia reached landmark agreement to cut both countries' nuclear arsenals by up to two-thirds over the next 10 years.

**2003** – Erika Harold from Urbana, Illinois crowned Miss America.

**February 2004** – Janet Jackson and Justin Timberlake created enormous scandal when Timberlake ripped the bodice of Jackson's costume during the halftime show of Super Bowl XXXVIII, exposing her on national television.



## Remembering Ellen Bowie

For nearly 20 years, Ellen Bowie was a familiar and welcome presence at Beckwith Hall. During her rounds as housekeeper, she always took great interest in the students and her co-workers, listening to their difficulties and offering words of support and comfort. Ellen started as a part-time weekend housekeeper in 1983 before assuming full-time duties in 1997. On December 28, 2003, Ellen succumbed to cancer, just four months after retiring.



“I knew Ellen since I was a student here in 1989, and I believe she thought of Beckwith as her second family,” shared Kat Madayag, former Beckwith Hall director. Ellen is remembered for her dedication to her job, taking great pride in making sure the building looked good at all times. “Ellen was an exemplary employee,” said former interim director Katherine Johnson. “She was dependable and hardworking, staying late some evenings to make sure a student’s laundry was returned to them. She was much more than a employee to staff and students—she was our friend, and we will miss her.” ☺

## It's All About Relationships

By Matthew Zellmer, Beckwith Resident, 2004

The best way to describe Beckwith Hall in a single word is “unique.” When I arrived in the fall of 2004, I had never lived in any place where everyone either had a disability or worked directly with those who did. Given that I came to UIUC as a graduate student after having spent many years at another institution in a fully integrated living environment, this was a major adjustment for me.

College is fundamentally a learning experience, and Beckwith taught me how blessed I was. I never again took for granted the ability to independently use the bathroom or feed myself. As I learned what a leg bag was and acclimated myself to the neighboring odor of a bowel program, I gained a new respect for those who were forced to have others manage those cares and didn't complain about it. All things considered, I had it easy. But let me tell you: I arrived at Beckwith with absolutely no idea what a “floater” was, and I left thinking it was one of mankind's greatest inventions.

At first, because we still weren't truly integrated among the able-bodied, I felt somewhat isolated from the outside world and didn't want to be at Beckwith. However, as time went on, I began to realize that Beckwith was about much more than just disabilities. It was about relationships.

---

*the place was like a home, and the people were like a family...the relationships forged were real and enduring.*

---

That's because Beckwith was a place that—if you lived there—you automatically knew everybody. Maybe not at first, but you would get to know them, whether it was at meals or movie nights, or numerous other gatherings never divulged to management. (You know, like the strenuous dining room study sessions where only milk and cookies were served.) And once everyone knew everyone, the place was like a home, and the people were like a family. You could go away with your door open and TV on and not have to worry. When you came home, there was always someone to talk to. Yes, that could be frustrating at times when you wanted to be alone, but come to think of it, it wouldn't be a real family if people didn't annoy other people at times. And the good outweighed the bad, as the relationships forged were real and enduring.

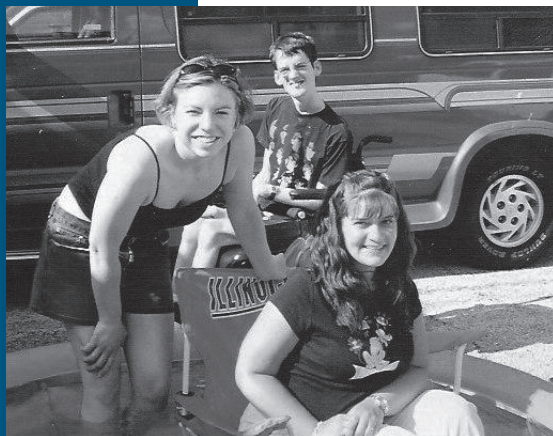
Another key word when discussing Beckwith is “progress,” and I am happy to learn that construction has finally begun on a fully integrated living environment that will still provide the essential assistance for daily living. As good as Beckwith has been for so many people, I believe the new environment will be even better. Because this change will not break the bond the disabled community at UIUC has established. In fact, this will make it stronger and more effective as students use this opportunity to educate the able-bodied about disabilities. There is no doubt that integration will improve the quality of the college experience. All that's left is for students to apply the lessons they learned at Beckwith. That should be easy, because it's all about relationships, and that's what Beckwith is best at.

Happy 25th, and thanks for the memories. ☺

## Beckwith Memories

By Katie Stolz, Resident Advisor

Working at Beckwith in 2003-2004 as one of the two resident advisors (RAs) that year was a life-changing experience for me in several ways. Not only did I meet some great friends whom I still keep in touch with, but Beckwith also helped me to find a home at the U of I during the year I was there. I still find myself missing Kerry's grilled chicken sandwiches, stopping by Grant's room



Katie Stolz with Mary Jo Crihfield and Brian Smith

to compare Mariah Carey to Neil Diamond, hearing about Adam's latest experiences, visiting in Carmen's room, hearing Court cheer on the latest ballgame...and I find myself still telling other people about all those fun times. Beckwith is a very unique community, and though in many ways it wasn't perfect, it was a place where people watched out for each other and were a very real part of one another's lives. Beckwith gave me a new perspective on navigating bumpy sidewalks, having a sense of humor, and getting to know people for who they are.

I have memories of riding the bus home with Mary Jo one chilly early-spring evening after class and musing out loud, "Wouldn't it be cool if I could do a class project to learn more about how living in Beckwith is affecting how people are learning and changing while they're in college?"

Now, a couple years later and working on my PhD in higher education at Michigan State University, I've studied the intersection of identity and disability in several higher education contexts including in the U.S., in England, and perhaps this summer in Mumbai, India. I don't think I would have ever become interested in learning more about having a disability and going to college if I hadn't gotten to know Beckwith Hall, and this interest eventually prompted me to go on to earn a doctorate degree.

Over the years Beckwith Hall has seen many faces, a few wild and crazy times, and some really important "growing" moments. I'm thrilled to see it celebrate its 25th anniversary, and I wish the best of luck to all the Beckwith residents and their families, staff, and graduates! 🍀

## Beckwith and Campus News

**2002** – Two long-time personal assistants were honored with awards for their continued dedication to assisting persons with disabilities. James Lee was awarded the Harold Scharper Service Award and Jennifer Knapp was chosen as 1 of 6 University of Illinois Student Employees of the Year.

**September, 2004** – Sam Williams competed in Boccia Ball in Paralympics held in Athens, Greece. He won a singles match in his first Paralympic competition.

**U of I average attendance** – 38,343

**U of I Tuition and Fees** – In state: \$4,904/semester; Out of State: \$14,579/semester

**Average Beckwith Room & Board** – \$10,136

**Average PA Costs** – \$10,521

**Beckwith Disability Demographics** – Cerebral Palsy, Muscular Dystrophy/Spinal Muscular Atrophy, Spinal Cord Injury

**In Memory** – Ellen Bowie, Terri Semicke



# Scrapbook 2000-2004

Clockwise from top left: 1) Santa's helpers at DSO Holiday party; 2) Michelle, Kerry, and Julia; 3) Karye Williard, Amy Bliele, Paula Garrison, Lauren Cercoske, and Mary Jo Carihfield; 4) Matt Mannos and Mary Jo Carihfield; 5) Beckwith residents and staff





# 2005 – Present

## World in Review

**February 2, 2005** – President Bush announced his plan to reform Social Security.

**April 2, 2005** – Pope John Paul II died.

**April 24, 2005** – Benedict XVI became the next Pope.

**August 25, 2005** – Hurricane Katrina caused catastrophic damage on the Gulf coast; Americans shaken over disaster and how ill-prepared all levels of the government were in its aftermath.

**October 19, 2005** – Former Iraqi president Saddam Hussein went on trial for the killing of 143 people in the town of Dujail, Iraq in 1982.

**2005** – Science fiction and fantasy dominated the box office with Star Wars: Episode III-Revenge of the Sith; The Chronicles of Narnia: The Lion, the Witch and the Wardrobe; Harry Potter and the Goblet of Fire; and the War of the Worlds.

**2005** – North Carolina defeated Fighting Illini in NCAA Basketball Championship game.

**2005** – More than 350 million digital songs were purchased.

**2005** – Cancer replaced heart disease as No. 1 cause of death for people ages 85 and under, though the number of deaths from both have fallen.



## Beckwith Reflections

By Grant Davis, Beckwith Resident, 2003-present

When I look back on this year, one of the things I am most proud of is the opportunity to be part of the Beckwith Hall Mentor Program. The purpose of this program is to help make the difficult transition to college and Beckwith easier for incoming freshmen. Throughout the year, returning Beckwith students were available to answer questions, give advice, or just be a friendly ear to our new freshmen. One of the most rewarding activities for me was a tour in which the mentors took the freshmen around on a tour of campus. During the tour, we showed the freshmen how to get to every building that was on each of their schedules. This activity was extremely important to me. During my time living at Beckwith I have been lucky enough to meet a lot of wonderful people. I moved in as a freshman having no idea how much impact this building would have on my life. When I got here, it took less than a day to learn that Beckwith was like no other place I had been before.

Looking back, my first afternoon in Beckwith is lost in a nervous haze. I sat around a table and was introduced to most of the staff. However, the entire time I just remember thinking that I did not want my parents to leave. I had never lived on my own before, and I was scared to death.

Shortly before my parents left, they took me out to dinner. When I returned to the building that evening, I discovered that I had locked myself out of my room. I had to ask the floater who was working that evening to help get me into my room. Once the door was open, we had time for some small talk. During the conversation, she asked if I was ready for classes to start. I told her that I was extremely nervous about living on such a large campus. She replied by asking what I was doing the following evening. She offered to take me out and walk my schedule. I was completely shocked. I had come from a hometown where I had to ask five times to get the smallest favor from most people. Now, I was standing in a room with someone who knew almost nothing about me, and she was offering to help me. That was the moment I realized that Beckwith was going to be different.

The following evening, I found myself sitting in my room wondering if she would actually show up. Sure enough, there was a knock on my door. That night, I was shown the location of every building, elevator, and accessible entrance that I would need during the semester. Obviously, this information was extremely helpful to me when classes started. It gave me a sense of comfort that was invaluable to a new freshman. This memory has stayed with me ever since. When I had the opportunity to lead a new group of freshmen on a similar tour, I felt it was extremely important for them to receive that same sense of comfort.



Adam Reid and Grant Davis

With the 25th Anniversary of Beckwith approaching, I often find myself reflecting on my time here. I have met many new friends, and created lots of memories. No matter what happens to me, one of my fondest memories of this place will always be my first. The generosity of a stranger to a freshman she could have easily ignored. I can only hope that my small contribution to our freshmen was as helpful to them, as those first two nights were for me. ☺

## Beckwith and Campus News

**September, 2005** – Costa Nikolaides competed in his first international competition at the Pan-American Championships in Argentina. He earned a Bronze medal in pairs competition.

**2006** – Costa Nikolaides competed in Brazil in Boccia Ball.

**2007** – Kevin Fritz, Beckwith freshman, won a seat on the Illinois Student Senate.

**April 19, 2007** – An honorary street, Tim Nugent Way, was dedicated on Stadium Drive near DRES in recognition of Dr. Nugent's remarkable accomplishments on behalf of persons with disabilities.

**U of I average attendance** – 40,342

**U of I Tuition and Fees** – In state: \$7,084/semester; Out of State: \$21,461/semester

**Average Beckwith Room & Board** – \$12,005

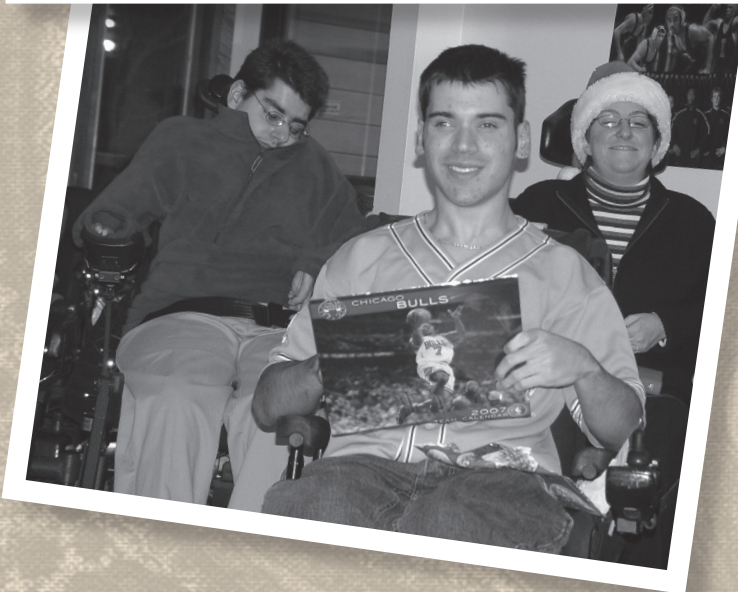
**Average PA Costs** – \$12,215

**Beckwith Disability Demographics** – Cerebral Palsy, Muscular Dystrophy/Spinal Muscular Atrophy, Spinal Cord Injury, Friedreich's Ataxia, Spina Bifida



## Scrapbook 2005-Present

Clockwise from top left: 1) Ji Hae Lee; 2) Snoopy at Beckwith Holiday party; 3) Annie and Steve Hopkins; 4) Muffi Lavigne and Ritz; 5) Costa Nikolaides, Michael Briede, and Muffi Lavigne at Holiday party; 6) Paige Lewis, Pat Malik, and Katherine Johnson





## History of the U of I Quad Rugby Team

The University of Illinois Quad Rugby Team was first organized during the 1989-90 school year under the coaching expertise of Steve Truels. After going winless in that initial year, the team finished the second season 2-11. Steadily improving, the Illinois team went 7-7 during the 1991-92 season, finishing 3rd in the Midwest Regional Tournament in which four Illini—Kirk Bonnell, Pat Faherty, Shawn Meredith, and Pat Cottini—were voted to the All-Regional Tournament Team.

During the 1992-93 season, a more mature and skillful Illinois team finished the season with a 14-16 record, with Coach Truels grooming Paige Lewis with her side-kick Morgan (a.k.a. “Spubert”) to become his predecessor. They finished second in the Regional Tournament which qualified them for their first United States Quad Rugby Association (USQRA) National bid. Kirk Bonnell, Norm Lyduch, and Shawn Meredith were part of the Regional’s All-Tournament team, with Shawn Meredith named the Most Valuable Player. That season ended with the team being ranked 10th in the country. Shawn Meredith, Pat Faherty, and Norm Lyduch were invited to tryout for the USQRA International team to compete that summer in Stoke-Mandeville, England. During the 1993-94 season, the Illini were upset during regional play in a three-way tie for second by the point differential tie-breaker to win them a return trip to Nationals. The Illini regrouped during the 1994-95 season and again earned themselves a trip to Nationals. Bill Renje, Jr., Denny Wesemann, and Shawn Meredith were members of the North Central Regional All-Tournament Team. Shawn Meredith was also voted the tournament’s Most Valuable Player. Though they weren’t satisfied with the outcome of the National Tournament, they were pleased that they were the first collegiate team to ever win a game during the USQRA National Tournament. What a great way to conclude the legacy of the U of I Quad Rugby program.



**Above:** Tim Nugent presents Ian Rice with 3rd-year award; **Left:** Chad Hebel of Illinois (with ball) and Denny Wesemann and Dave Hanson of Chicago; **Bottom:** Larry Labiak assisted by Coach Steve Truels, Shawn Meredith giving tips to Ian Rice, Norm Lyduch about to get position on Bill Renje (all of these individuals were affiliated with the U of I at one time).

*(continued)*

## Quad Rugby Participants

All of the following individuals competed on the University of Illinois Quad Rugby team for at least one year from 1989-1995. Some also competed in track as indicated.

**Jeff Balok** – 1992-93 National Team member, Stoke Mandeville (T), 1994-95 National Team Member **T\***

**Kirk Bonnell** – International prominence (T) **T\***

**Gerard Broeker** – 1992-93 National Team member \*

**Todd Caschette**

**Bob Crandall**

**Pat Cottini** – 1994-95 National Team Member, International prominence(T) 1996 Paralympics **T**

**Pat Faherty**

**David Ford\***

**Luke Haggerty\***

**Chad Hebel** – 1992-93 National Team member, 1994-95 National Team Member **T**

**Tom Jacobson \***

**Brad Johnson** – 1992-93 National Team member, 1994-95 National Team Member

**Paul LeVasseur** – 1992-93 National Team member, 1994-95 National Team Member **T**

**Allison Locey T**

**Norm Lydich** – 1992-93 National Team member, 1994-95 National Team Member, 1996 Paralympics (T),

2000 Paralympics member of Gold Medal team, 2004 Paralympics Bronze medal winners, 2005 USQRA Athlete of the Year, 2006 Gold Medal World Wheelchair Rugby Championships. **T\***

**Shawn Meredith** – 1992-93 National Team member, 1994-95 National Team Member, International prominence (T) 1992 & 1996 Paralympics **T**

**Pat O'Boyle**

**Ron Phelps \***

**Steve Piorkowski T**

**Mike Rembis \***

**Bill Renje, Jr.** – 1992-93 National Team member, 1994-95 National Team Member, 1996 & 2000 Paralympics member of Gold Medal team

**Ian Rice** – 1994-95 National Team Member, Won w/c division at the 1996 Chicago Marathon **T\***

**Tim Schellenberg \***

**Andy Schmidt T\***

**Steve Shannessy**

**Pete Soby**

**Scott Stanley \***

**Kevin Sullivan T**

**Denny Wesemann, Jr.** – 1994-95 National Team Member **T**

**\* = Resident of Beckwith**

**T = Track**



Coach Paige Lewis instructs her team during the 1995 USQRA National Tournament.



# The Future

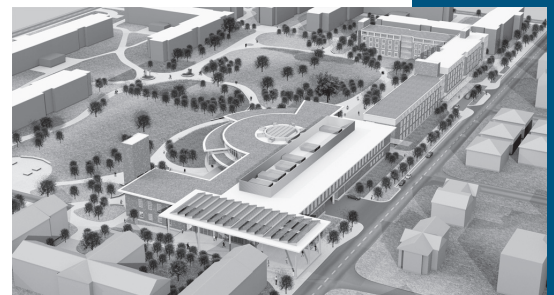
Beckwith Hall is poised to enter a new era as the University of Illinois is expanding and renovating the Gregory Drive and Peabody Drive residence halls to accommodate students who are in need of personal assistant services.

The operation of this new facility will be a cooperative venture between the Division of Disability Resources and Educational Services (DRES) and University Housing. This partnership will provide a variety of opportunities that have not been previously available, such as the development of a Living Learning Community. This community will provide learning experiences both through formal courses and informal interactions between those with and without disabilities. Students without disabilities who choose to live at this new residence hall will include those who want to learn more about people with disabilities as well as interact and be immersed within the culture and climate.

The project will include construction of two residence halls to house 840 residents, including the Beckwith students. It is anticipated that the new residence hall for Beckwith students will be completed in 2009. Some of the features being planned for this new facility include:

- all resident rooms located on the first floor
- a classroom/kitchen space completely accessible so that students may use it to learn community living skills necessary for living outside Beckwith Hall
- accessible features such as pocket doors, keyless entry into rooms, etc.
- a student lounge, computer lab, laundry facilities, and other features that currently exist at Beckwith Hall

Those students living in the new facility will be using the new dining hall that is being built within this complex. This arrangement will further integrate Beckwith students with the larger University of Illinois student community. The partnership with University Housing will allow DRES to continue in its mission of providing the best programs and services in the country to college students with severe physical disabilities, and to be the leader in evidence-based practice and translational research that leads to improved services for students with disabilities at all universities. ☺



**Architectural renderings of the future Beckwith Hall facility**

# Favorite Beckwith Recipes

Over the years, both staff and students have contributed greatly to the enjoyment of countless parties and get-togethers by sharing their recipes for treats and other delectables. In celebration of our 25th anniversary we have collected a few favorites, which are presented below and on the following pages.

## Pecan Crunch

*Submitted by Karye Willard, resident*

### Ingredients:

1 c. butter (do not substitute!)  
1 ¼ c. granulated cane sugar  
2 T. water  
2 T. corn syrup  
1 12 oz. pkg. milk chocolate chips (Hershey's is the best!)  
½ c. pecan pieces

- \* A candy thermometer is a big help!
- \* Use metal utensils

Line a jelly roll pan with aluminum foil and pour the pecan pieces onto the foil, distributing them to within an inch and a half of the sides of the pan. Melt butter over medium heat in a large saucepan. Add granulated sugar and stir until dissolved. Stir in water and corn syrup. When the mixture begins to bubble, attach candy thermometer to the side of the saucepan. Stir the mixture frequently with a metal or wooden spoon and adjust heat if needed to keep it at a steady bubbling boil. Continue to do this until the candy thermometer reaches 300 degrees, which is the hard crack stage. (The mixture's color will change from a creamy yellow to a deep golden toffee. From about 275 degrees on you may need to stir constantly.) Once the mixture reaches 300 degrees, remove from the heat and pour over the pecan pieces. Carefully spread the mixture until it is at an even thickness. It will begin hardening pretty quickly. Sprinkle the package of milk chocolate chips over the mixture while it is hot. After 3-5 minutes they will be shiny and soft and you can spread the chocolate evenly over the toffee. Refrigerate for several hours to overnight. Break into bite size pieces and try not to eat the whole batch yourself! Makes about 2 pounds of candy.

## Symphony Brownies

*Submitted by Karye Willard, resident*

### Ingredients:

3 large Hershey Symphony chocolate bars (6 oz. each) any variety  
2 brownie packet mixes (8 x 8 pan size)

Prepare the brownie mixes according to the package directions in 2 separate mixing bowls. Grease the bottom of a 9 x 13-inch cake pan. Pour the contents of one prepared mix into the pan. Unwrap the 3 chocolate bars and lay them side-by-side on top of the brownie mixture. (This works best if you lay the outer bars with the indentations up and the middle bar with the indentations down.) Pour the other prepared mix on top of the chocolate bars and spread evenly to cover. Bake for 30 minutes at 350 degrees. You can substitute a brownie mix or use a homemade brownie recipe that requires a 9 x 13-inch pan and divide the mixture in half to make the top and bottom layer. When I do this I add an extra egg to the batter.

## Fruit Dip

*Submitted by Andrea Holmgren, PA*

### Ingredients:

7 oz. Jar of Marshmallow Cream  
8 oz. Pkg. Cream Cheese

Mix together in a bowl. Then add to taste:

Juice of a fresh orange  
2 Tsp. Orange Zest



## Pistachio Dessert

*Submitted by Kristin Kaminski, resident (we made this on St. Patrick's Day)*

### Ingredients:

45 Ritz Crackers, crushed  
1 ½ sticks margarine  
2 Pkg. instant pistachio pudding mix  
1 ½ cups milk  
1 qt. and 3 scoops vanilla ice cream  
1 (8oz.) Cool Whip (room temp)  
3 Heath Bars, crushed

Mix together crackers and melted margarine. Press into a 9 x 13-inch cake pan. Bake 10 min. at 350 degrees. Cool completely. Mix together pudding mix and milk til set. Fold in ice cream. Pat on top of crumb mixture. Spread Cool Whip on top of ice cream layer. In blender, crush Heath bars. Sprinkle crumbs on top of Cool Whip. This will keep a week in the freezer.

## Yvonne Kaminski's Sensational Sweet Snack Mix

*Submitted by Kristin Kaminski, resident*

### Ingredients:

14 cups popped corn  
3 cups rice cereal  
2 cups salted peanuts  
1 lb. white confectionary coating (almond bark)  
3 tbsp. creamy peanut butter

Combine popcorn, rice, peanuts in a large bowl. Melt coating and peanut butter in microwave. Stir. Pour over popcorn mixture. Stir to coat. Spread evenly over wax paper. Let set for 2 hours. Store in airtight container.

## Velveeta/Salsa Dip

*Submitted by Andrea Holmgren, PA*

### Ingredients:

1 lb. (16 Oz.) Velveeta cheese, cut up  
1 cup thick chunky salsa

Mix Velveeta and salsa in medium microwaveable bowl. Microwave on high 5 min. or until Velveeta is completely melted and mixture is well blended, stirring after 3 min.

## Quick Fried Rice

*Submitted by Gary Obaob, PA*

### Ingredients:

Olive Oil, about 2 Tbsp.  
Crushed Red Pepper flakes, if desired  
Diced Onion, 1 white or yellow  
Garlic, 2-3 cloves, diced  
Frozen Vegetables, ¼- ½ cup depending on your own taste (I use frozen peas, but others can be substituted)  
Cooked white rice- leftover rice is great, about 2 cups  
Soy sauce  
One egg  
Salt and Pepper to taste

### Optional:

Sesame Seeds  
Scallions, chopped

Heat oil in a pan. Add red pepper and heat for a moment (this allows the heat from the pepper to spread in the oil). Saute onion and garlic until onions begin to turn translucent. Add vegetables; since these are precooked they only need to be heated through. Spread rice over all the vegetables and sprinkle soy sauce over the rice. Mix rice and veggies together so the rice is a mottled brown-white mixture. Push everything to the sides of the pan and create a well in the center. Add the egg into the well and begin beating immediately. Slowly incorporate the rice mixture into the egg, bringing it into the well as you stir. Continue to fry until the egg cooks. Plate and enjoy!

(continued)

## Teriyaki Marinade

Submitted by Gary Obaob, PA

### Ingredients:

1 lb. beef, chicken, or salmon (beef and chicken can be chopped into smaller pieces)  
Soy Sauce, one cup  
Rice Wine Vinegar, ½ cup  
Brown Sugar, 2-3 Tbsp.  
Fresh Ginger, 3-4 large slices from the root  
Garlic, 2-3 cloves, roughly chopped  
Salt and Pepper

Add all ingredients in a sealable container. Add beef, chicken, or salmon to the mixture then place in the refrigerator. Marinate for at least half an hour. Remove from marinade and cook depending on preparation:

Chopped – stir fry until cooked thoroughly  
Steak/whole breast/filet – sauté in pan until browning occurs then flip; can be finished in pan or place under broiler.

## Blue Cheese – Citrus Salad

Submitted by Gary Obaob, PA

### Ingredients:

Baby Greens  
Red Onion, thinly sliced  
Tomato, cut into wedges  
Blue Cheese crumbles  
Canned Mandarin Oranges, drained  
Raspberry vinaigrette  
Black pepper

Place ingredients stacked in a bowl, starting with the baby greens as a base and continue down the list.

## Cream Cheese Crescent Bars

Submitted by Pat Malik, Director

### Ingredients:

2-8oz. tubes crescent rolls, separated  
2-8oz packages cream cheese, softened  
1 t vanilla extract  
2/3 c sugar  
1 egg separated

Line the bottom of a greased 13 x 9-inch baking pan with one package crescent rolls, pinching seams together; set aside. Blend cream cheese, vanilla, sugar and egg yolk together; spread evenly over crust. Gently place the remaining crescent roll dough on top, pinching seams together; set aside. Whisk egg white until frothy; brush over the top of the dough. Sprinkle with topping; bake at 350 degrees until golden, about 25-30 min. Slice into bars to serve. Makes 2 dozen.

### Topping:

½ c sugar  
¼ c chopped pecans  
1 t. cinnamon

Gently toss all ingredients together.

## Banana Bread/Muffins

Submitted by Christine Scully, PA

### Ingredients:

1-3/4 cup flour  
2 tsp. baking powder  
1/4 tsp. baking soda  
1/2 tsp. salt  
2/3 cup sugar  
2 eggs  
1/3 cup oil  
2 to 3 ripe bananas (the browner the better)  
about 1 cup of chocolate chips (if you want)

Mix together the dry ingredients in a small bowl. Mash the bananas and add other wet ingredients in a large bowl. Gradually add dry ingredients to wet ingredients mixture. Add chocolate chips (if you're using them).

For Bread: pour into a greased loaf pan. Makes one loaf. Bake for 50-60 minutes at 350 degrees.

For Muffins (more "accessible" option I have found): pour into greased muffin pans with muffin cups. Makes 12 medium-sized muffins. Bake for 30 minutes at 350 degrees.

I liked to save brown bananas from the Beckwith dining hall that were fated for the dumpster, and bring them back as banana bread.



## Irish American Soda Bread

*Submitted by Laura Riermaier, resident*

### Ingredients:

Whisk together thoroughly in a large bowl:

- 1 2/3 c all purpose flour
- 2 T sugar
- 1 t baking powder
- 1/2 t baking soda
- 1/2 t salt

Stir in:

- 1 c raisins

Whisk together in another bowl:

- 1 large egg
- 2/3 c buttermilk
- 4 T (1/2 stick) warm melted unsalted butter

Add to the flour mixture and stir just until dry ingredients are moistened. The batter will be stiff but sticky. Scrape the batter onto the baking sheet in a mound 6-7 inches in diameter. Use a sharp knife to slash a large X about 1/2 inch deep into the top of the batter. Bake until golden brown and a toothpick inserted in the center comes out clean-25-30 minutes. Transfer the bread to a rack to cool completely before serving.

## Upside-Down Cinnamon-Apple Coffee Cake

*Submitted by Pat Malik, Director*

### Ingredients:

- 1 1/2 c chopped peeled apples
- 1 (12.4 oz) can Pillsbury refrigerated Cinnamon Rolls with icing
- 1/2 c pecan halves or pieces
- 2 T margarine or butter, melted
- 1/3 c firmly packed brown sugar
- 2 T corn syrup

Heat oven to 350 degrees. Spray 9-inch glass pie pan with nonstick cooking spray. Spread 1 c of the apples in sprayed pan. Separate dough into 8 rolls. Cut each roll into quarters; place in large bowl. Add remaining 1/2 c apples and pecans. In a small bowl, combine margarine, brown sugar and corn syrup; mix well. Add brown sugar mixture to dough mixture; toss gently to combine. Spoon mixture over apples in pan. Bake at 350 degrees for 28-38 minutes or until deep golden brown. Cool 5 minutes. Invert onto serving platter. Remove lid from icing. Microwave icing on HIGH for 10-15 seconds or until drizzling consistency. Drizzle over warm coffee cake. Serve warm.

## Best-Ever Banana Bread

*Submitted by Carmen Sutherland, resident*

### Ingredients:

- 2 c Sugar
- 1 c butter
- 6 ripe bananas-mashed
- 4 eggs-well beaten
- 2 1/2 c all-purpose flour
- 2 t baking soda
- 1 t salt
- 1 pkg. semi-sweet mini chocolate chips

Preheat oven to 350 degrees. With electric beater, cream butter & sugar until light & fluffy. Add bananas & eggs, then beat until well mixed. Sift dry ingredients. Blend with banana mixture, but do not over mix. Pour into lightly greased loaf pans. Bake 45 min to 1 hr., test for doneness. Cool on rack for 10 min before removing from pans. These freeze beautifully.

## Irish Chocolate Mint Dessert

*Submitted by Pat Malik, Director*

### Ingredients:

- 3 sticks oleo or butter
- 2 c granulated sugar
- 1/2 t baking powder
- 2 t vanilla
- 3/4 c cocoa
- 1 c flour

Beat til blended. Pour into 13 x 9-inch greased pan. Bake 30-35 min. at 350 degrees.

### Mint crème center:

- 2 2/3 c powdered sugar
- 1 t mint extract
- 1 stick oleo or butter
- 1 T plus 1t water
- 4 drops green food color

Beat until smooth. Spread on cooled brownies

### Chocolate glaze:

- 1c chocolate chips
- 6 T melted oleo or butter

Pour over cooled brownies

Beckwith Hall  
201 East John Street  
Champaign, Illinois 61820



**COLLEGE OF APPLIED HEALTH SCIENCES**  
UNIVERSITY OF ILLINOIS AT URBANA-CHAMPAIGN